

## Data Sheet



### Features

- SAA approved Service fuse and holder (Certificate - SAA172539)
- Transparent or black body options
- Front wired or back wired
- Can be supplied preloaded with neutral link or service fuse of your choice
- All supplied with Anti-intrusion plate fitted
- Flexible Anti-intrusion plate to avoid snapping
- Sealable body as required for service fuses
- Made from flame retardant thermoplastic
- AS60269 compliant

### Applications

- House hold service fuse
- Protecting energy meters and mains electrical cable from over load

### Description

Service fuse holders are suitable for use with BS fuse links which are 22mm or 30mm Diameter and are 57mm long.

## Part Numbers

### MerCs Service Fuse Holders 500VAC

Service Fuse Holders, Back or Front Wiring option, Black or Transparent, 22 or 30mm Fuses, With 4 entries, With or Without Preloaded Service Fuse or Neutral link. Supplied with tagout shield.



Code	Description	Size
FLHBBS	Black Back Wire	2A - 22x57
FLHBFS	Black Front Wire	2A - 22x57
FLHBBL	Black Back Wire	2B - 30x57
FLHBFL	Black Front Wire	2B - 30x57
FLHBFS	Transparent Back Wire c/w Neutral link	2A - 22x57
FLHTFS	Transparent Front Wire c/w 100A Fuse link	2A - 22x57
FLHTBL	Transparent Front Wire	2B - 30x57
FLHTFL	Transparent Front Wire	2B - 30x57

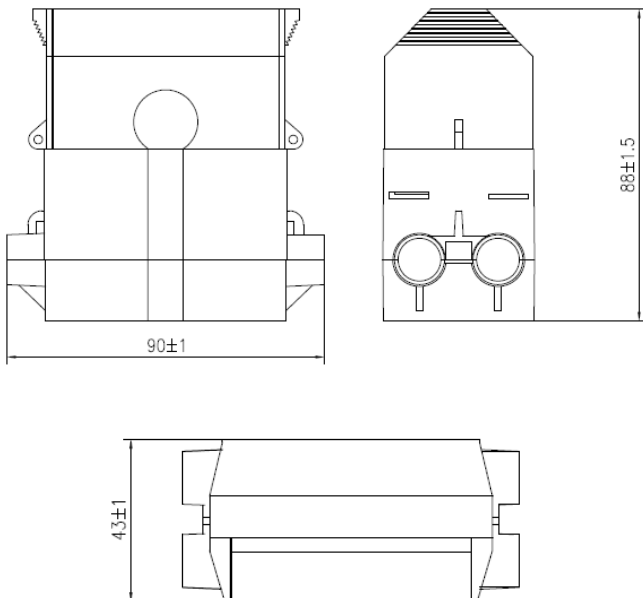
## MerCs Service Fuse Holders 500VAC

Service Fuse Holders, Back or Front Wiring option, Black or Transparent, 22 or 30mm Fuses, With 4 entries, With or Without Preloaded Service Fuse or Neutral link. Supplied with tagout shield.



Code	Description	Size	Amp Rating
FLS20	Service Fuse Links	2A - 22x57mm	20A
FLS30			30A
FLS40			40A
FLS45			45A
FLS50			50A
FLS60			60A
FLS80			80A
FLL50	Service Fuse Links	2B - 30x57mm	50A
FLL60			60A
FLL80			80A
FLL100			100A

### Dimensions



### Technical Data

Rated Current	100Amp
Rated Voltage	500V
Rated peak Withstand Voltage	33kA
Rated impulse withstand voltage	8kV (Uimp)
Screw size mounting	M5
Weight with fuse	365g
Weight without fuse	270g
Max Cable size	50mm <sup>2</sup> (9.0mmDia)
Fuse type	2A/2B
Maximum Tighten torque	3-4 Nm