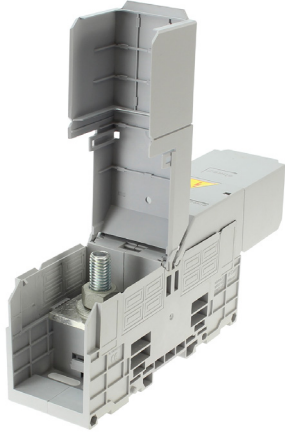


Power Terminals 35mmSQ – 300mmSQ

DIN and Surface Mount



Data Sheet

Features

- Rail Mounted Power Terminal with Hinged Shrouds
- Type SPT XL
- 1000Vac rating
- 35mm² – 300mm² sizes
- Hinged terminal covers
- I.P.:20

Applications

The new SPT XL hinged terminals are used in switchboards and electrical cabinets for terminating larger cables and for input and output feeds.

Description

MerCs offers a new design type SPT XL in which hinged covers are provided to prevent contact with the cable termination points. Cables with fork or ring lugs are connected by nuts to the terminal after lifting hinged covers which are closed after the connection is completed. These are Finger-safe Terminals by design, not requiring extra covers or barrier plates, for safety or protection. Their housing is Polyamide 66 and currently available in various sizes from 35mm² to 300mm² connection capacity, and with rated currents from 140 Amps to 520 Amps respectively. Hinged covers are supplied with the body and are also available as a spare part if required.

Specifications



Connection	Nut & Bolt
Material	PA6, 6
Standard Colour	Grey
Standard	IEC 60947-7-1
Pollution Degree	III

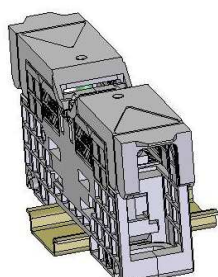
Part Numbers

Part Number	Cable Size (mm ²)	Current Rating (A)	Rated Voltage (Vac) (IEC)	Terminal Torque Rating (Nm)	Height mm	Width mm	Length mm	Short Time Surge kA	Rated Impulse kV
Terminals									
ME-SPT35(G)	35	140	1000	3	59	27	135	4.2	8
ME-SPT70(G)	70	192	1000	6	71	32	180	8.4	8
ME-SPT95(G)	95	232	1000	6	71	32	180	11.4	8
ME-SPT120(G)	120	269	1000	10	80.3	42	226	14.4	8
ME-SPT150(G)	150	309	1000	10	80.3	42	226	18	8
ME-SPT185(G)	185	353	1000	14	89.3	55	287	22.2	8
ME-SPT240(G)	240	415	1000	14	89.3	55	287	28.8	8
ME-SPT300(G)	300	520	1000	25	89.3	55	287	36	8
Spare Covers									
		Colour	Stud Size						
ME-CSPT35(G)	35	Grey	M6						
ME-CSPT70(G)	70	Grey	M8						
ME-CSPT95(G)	95	Grey	M8						
ME-CSPT120(G)	120	Grey	M10						
ME-CSPT150(G)	150	Grey	M10						
ME-CSPT185(G)	185	Grey	M12						
ME-CSPT240(G)	240	Grey	M12						
ME-CSPT300(G)	300	Grey	M16						
Terminal Printing Label Strip									
ME-5LBLKN12SPN	12mm width	White							

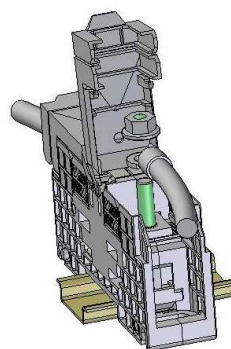
Instructions for Power Terminal

Mounting & Cable Connection

1. After removal of packing, terminal is to be placed on 35mm channel and is to be pressed from top in direction as shown in figure "A". This will lock the terminal on channel.
2. For connecting the cable, open the cover in the direction as shown in figure "B" and Unscrew the nut & washer assembly.
3. Insert the cable with crimped lug in the stud and tighten the nut & washer assembly as shown in figure "B". Refer to the chart above the recommended torque ratings



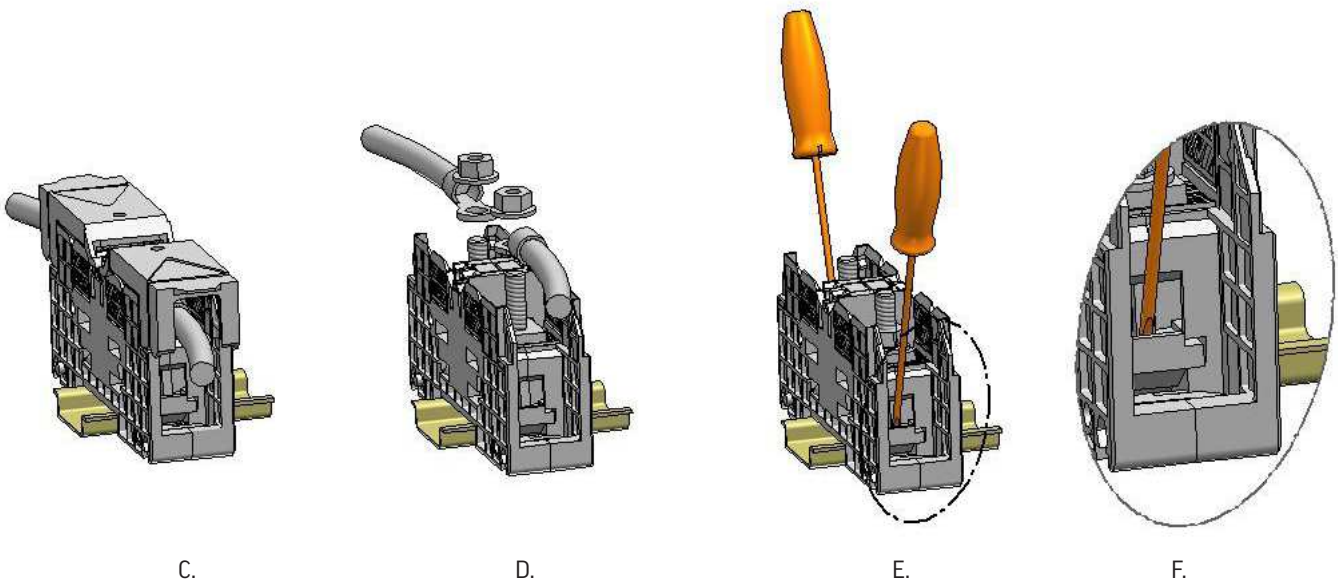
A.



B.

Cable Disconnection & Removal

1. Ensure that power supply on both sides of terminal is completely switched off.
2. Remove both the terminal cover as shown in figure "D".
3. After unscrewing the nut & washer assembly, remove the lug cable connection as shown in figure "D".
4. After retightening the nut & washer assembly, insert the two screw drivers and lift the small plastic part (Footer) in the direction as shown in figure "E".
5. In case of more nos. of power terminals mounted side by side on channel, space of 3 to 4 mm needs to be created for allowing terminal to come out.



General instructions

Instructions regarding tightening torque and wire stripping length must be observed carefully:

- Recommended tightening torque: See Chart above

Precautions regarding lugs positioning

